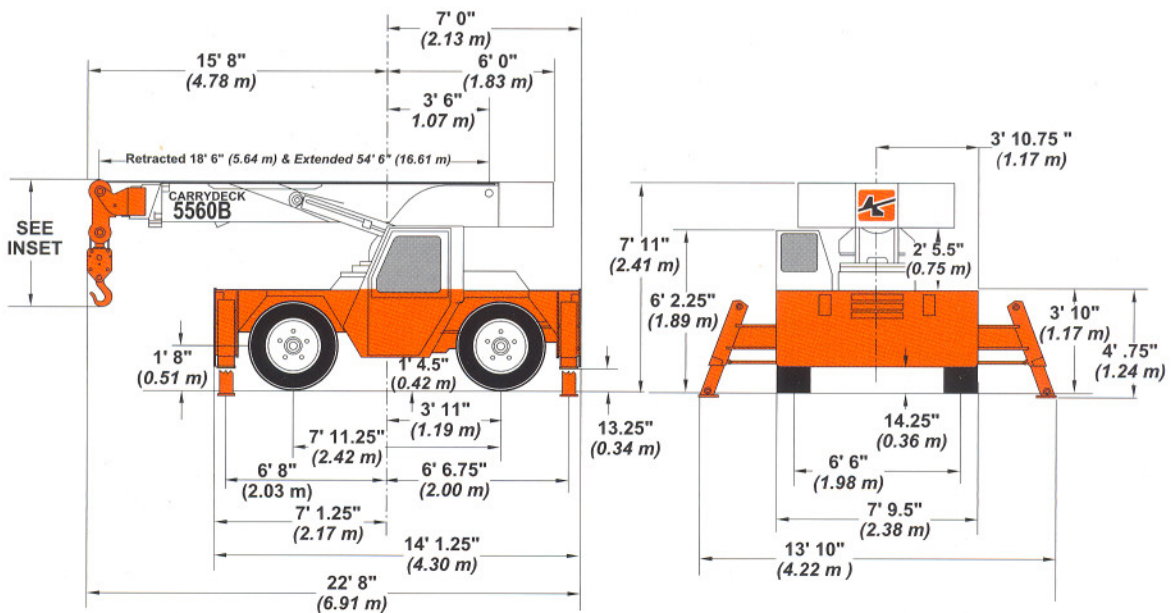
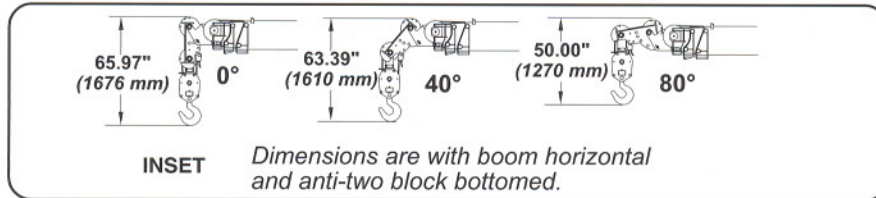


**Carrydeck®
Industrial Cranes**
**5560B
18 TON (16 330 KG)**


Specifications

GENERAL INFORMATION

Unit weight	30,700 lb (13 926 kg)
Boom elevation	0° - 80°
Ourigger pad size	8.75" x 10" (222 mm x 254 mm)

SERVICE CAPACITIES

Fuel tank	40 gal. (151.4 L)
Hydraulic system	30 gal. (113.6 L)
Hydraulic tank	40 gal. (151.4 L)
Cooling system	23 qt. (21.8 L)
Transmission	4 gal. (15.1 L)
Differential	
Front axle - center	24.5 qt. (23.2 L)
Hubs (per hub)	1.6 qt. (1.5 L)
Rear axle - center	19 qt. (18 L)
Hubs (per hub)	1.8 qt. (1.7 L)

WINCHES (HOIST)

Main winch:	
Drum diameter	9.75" (248 mm)
Wire rope diameter	1/2" (12.7 mm)
Trefil 8 X 25 wire rope, galv.	
Wire rope length	310' (94.5 m)
Line speed (average)	158 fpm (48.2 m/min)
Line pull, bare drum	12,000 lb (5443 kg)

Note: Maximum permissible single line pull9,500 lb (4309 kg)

Hydraulic recessed winch (optional):

Drum diameter	4" (102 mm)
Wire rope diameter	7/16" (11 mm)
Wire rope length	115' (35 m)
Line speed, first layer	26 fpm (7.9 m/min)
Line pull, bare drum	10,000 lb (4536 kg)

STANDARD EQUIPMENT

- Hydraulic Boom:
 - 4-section, 18' 6" to 54' 6" (5.64 m to 16.61 m) from boom pivot pin to boom head pin
- Pivoting boom head (-15°, -30°, 0°, +40° & +80°)
- 4-wheel steer
- Crab steering
- 4-speed power shift transmission
- 2-Wheel Drive
- Left and right side outrigger controls
- Boom angle indicators (2)
- Hydraulic operated pilot controls that allow simultaneous crane control functions
- Anti-skid deck surface
- 75 ft² (6.96 m²) carrydeck. 20,000 lb. (9072 kg) deck load.
- Double blocking tele out, winch in and luff down kickout

Specifications (continued)

- Electric horn
- Lights-head, tail, rear work, stop and turn signals
- Engine hourmeter
- Hydraulic service and parking brakes
- All steel cab structure
- Adjustable operator's seat with seat belt
- Cummins QSB4.5 diesel engine
- Lighted instrument gauges (oil pressure, engine temperature, fuel gauge, voltmeter and hourmeter)
- 80° boom elevation
- Front and rear tie down lugs
- Backup alarm
- 1 year, 2000 hour warranty (parts and labor) and 5 year structural warranty
- Outrigger - 2-stage hydraulic telescoping box - front and rear
- Quick-reeve 18 ton (16 330 kg) doublesheave hoist block with swing/swivel hook with safety latch
- Rope packer
- All load carrying cylinders include load hold check valves
- Built-in tool box
- Load Indicator

OPTIONAL EQUIPMENT

- Enclosed cab with windshield wiper and sliding right side window
- Suspension seat
- Independent outrigger controls (four controls)
- Engine - GM 4.3L electronic fuel injected (EFI), V6, dual fuel (gasoline or L.P. gas with engine shutdown feature)
- Four-wheel drive with oscillating rear axle (1.5°)
- Rough terrain package with oscillating rear axle (4°) and axle lockouts

ACCESSORIES AND ATTACHMENTS

- Cold start kit (Ether injector and second battery)
- Load moment indicator (LMI) system
- Flashing amber strobe light
- Rear hitch (pintle)
- Front hitch (pintle)
- Swing away boom extension - 15' (4.6 m) offsets 15° and 30° with standard pivoting boom head
- Single part line down haul block
- Hydraulic recessed winch
- Heater and defroster (hot water)
- Air conditioning
- Spare wheel and tire
- Engine shut down gauges (diesel)
- Dual rearview mirrors
- Spark arrestor muffler
- Foam filled tires
- Fire extinguisher
- Lifting lugs (four)
- Catalytic converter for diesel engine
- 3-ton capacity searcher hook
- Engine block heater for diesel engine
- Head light and tail light grilles

HYDRAULIC SYSTEM

Main pump	Gear-type with four sections	
Section 1	30 gpm (113.6 L)	
Section 2	26 gpm (98.4 L)	
Section 3	16 gpm (60.6 L)	
Section 4	16 gpm (60.6 L)	
Swing system	360° continuous swing	
	system has positive operator control	
Swing speed	continuous at 2.5 rpm	
System pressure	3600 psi (24 821 kPa)	

HYDRAULIC CYLINDERS

	CYCLE TIME	
	800 rpm	2500 rpm
Hoist Cylinder (full stroke):		
Extend	58 sec	18 sec
Retract	42 sec	12 sec
Telescope Cylinder (full stroke):		
Extend	120 sec	43 sec
Retract	72 sec	31 sec
Outriggers (individual):		
Out	8 sec	1 sec
Down	16 sec	4 sec
Up	20 sec	3 sec
In	5 sec	1 sec

DRAWBAR PULL

Unit equipped with 385/65R22.5 tires, diesel engine and no load on deck:

1st gear	19,950 lb (9049 kg)
2nd gear	11,113 lb (5041 kg)
3rd gear	6,000 lb (2722 kg)
4th gear	3,500 lb (1588 kg)

ENGINE

Standard (Diesel):	
Make and model	Cummins QSB4.5L US EPA Tier 2, EU Stage II certified
Horsepower	99 @ 2500 rpm (74kw @ 2500 rpm)
Optional:	
Make and model	GM 4.3L fuel injected, V-6
Horsepower	101 @ 2500 rpm (75.3 kw @ 2500 rpm)

ELECTRICAL

Starting system	12 volt electric
Battery (1)	820 CCA @ 0° F (-18° C)
Alternator	63 amp

TRANSMISSION

Type	power shift transmission 4-speed forward/reverse with electronic control unit (ECU) for shifting protection
------------	--

Unit standard with transmission oil cooler and filter.

FRONT AXLE

Rigid mounted planetary drive/steer with limited slip differential.

REAR AXLE

Two-Wheel Drive	Steer axle with 1.5° of oscillation
Four-Wheel Drive (optional)	Planetary drive/steer axle with 1.5° of oscillation, or 4° oscillation.

BRAKES

Service Brakes	Front and rear, internal wet disc, hydraulic actuated
Parking Brake	Spring applied, hydraulic released disc brake, meets SAE J1977 code for secondary braking

TIRE SIZE

385/65R22.5 radial, high traction tread

TURNING SPECIFICATIONS

Turning radius: to centerline of outside wheels	
Two-wheel steer	21' 6" (6.55 m)
Four-wheel steer	12' 4" (3.76 m)

TRAVEL SPEEDS

Standard tires, diesel engine:	
1st gear	4 mph (6.4 k/h)
2nd gear	7 mph (11.3 k/h)
3rd gear	13 mph (20.9 k/h)
4th gear:	21 mph (33.8 k/h)

MAXIMUM GRADEABILITY (Paved Surface)

1st gear (calculated, standard tires, diesel engine):	
No load	68%
20,000 lb (9072 kg) load	40%
Note: All specifications are stated in accordance with PCSA and ANSI B30.5 definitions, SAE standards or recommended practices, where applicable.	

Rated Load Capacities - 5560B

Operating Radius	*On Extended and Down Outriggers Less Boom Extension 360° or Retracted and Down Front/Rear **On Retracted and Down Outriggers Less Boom Extension 360°												On Rubber Less Boom Extension 360°		
	18.5' (5.6 m) Boom				30.5' (9.3 m) Boom			42.5' (13.0 m) Boom			54.5' (16.6 m) Boom			Any Boom Length	
	Boom Angle	*Rated Load	**Rated Load	Boom Angle	*Rated Load	**Rated Load	Boom Angle	*Rated Load	**Rated Load	Boom Angle	*Rated Load	**Rated Load	Front Rating	360° Rating	
6' (1.8 m)	64°	36,000 lb (16 329 kg)	36,000 lb (13 608 kg)	75°	24,500 lb (11 113 kg)	24,500 lb (11 113 kg)	79°	23,700 lb (10 750 kg)	23,700 lb (10 750 kg)	-	-	-	16,000 lb (7 258 kg)	10,900 lb (4 944 kg)	
8' (2.4 m)	57°	31,500 lb (14 288 kg)	29,000 lb (13 154 kg)	71°	24,500 lb (11 113 kg)	24,500 lb (11 113 kg)	77°	23,000 lb (10 433 kg)	23,000 lb (10 433 kg)	80°	17,400 lb (7 893 kg)	17,400 lb (7 893 kg)	13,000 lb (5 897 kg)	8,700 lb (3 946 kg)	
10' (3.0 m)	49°	24,000 lb (10 886 kg)	16,000 lb (7 258 kg)	67°	24,000 lb (10 886 kg)	22,000 lb (9 979 kg)	74°	21,500 lb (9 752 kg)	20,000 lb (9 072 kg)	77°	15,800 lb (7 167 kg)	15,800 lb (7 167 kg)	11,000 lb (4 990 kg)	7,400 lb (3 357 kg)	
12' (3.7 m)	39°	19,500 lb (8 845 kg)	11,400 lb (5 171 kg)	63°	20,000 lb (9 072 kg)	12,900 lb (5 851 kg)	71°	19,700 lb (8 936 kg)	12,800 lb (5 806 kg)	75°	14,000 lb (6 350 kg)	13,000 lb (5 897 kg)	9,100 lb (4 128 kg)	6,400 lb (2 903 kg)	
14' (4.3 m)	25°	16,200 lb (7 348 kg)	8,900 lb (4 037 kg)	58°	16,800 lb (7 621 kg)	9,900 lb (4 491 kg)	68°	17,000 lb (7 711 kg)	10,200 lb (4 627 kg)	73°	12,600 lb (5 715 kg)	10,600 lb (4 808 kg)	7,800 lb (3 538 kg)	5,600 lb (2 540 kg)	
15' (4.6 m)	0°	15,000 lb (6 804 kg)	8,000 lb (3 629 kg)	56°	15,500 lb (7 031 kg)	8,900 lb (4 037 kg)	66°	15,800 lb (7 167 kg)	9,300 lb (4 219 kg)	72°	12,000 lb (5 443 kg)	9,500 lb (4 309 kg)	7,100 lb (3 221 kg)	5,300 lb (2 404 kg)	
16' (4.9 m)	-	-	-	53°	14,400 lb (6 532 kg)	8,100 lb (3 674 kg)	65°	14,600 lb (6 623 kg)	8,500 lb (3 856 kg)	71°	11,400 lb (5 171 kg)	8,500 lb (3 856 kg)	6,500 lb (2 948 kg)	4,900 lb (2 223 kg)	
18' (5.5 m)	-	-	-	48°	12,500 lb (5 670 kg)	6,800 lb (3 085 kg)	62°	12,700 lb (5 761 kg)	7,200 lb (3 266 kg)	69°	10,500 lb (4 762 kg)	7,200 lb (3 266 kg)	5,600 lb (2 540 kg)	4,200 lb (1 905 kg)	
20' (6.1 m)	-	-	-	43°	11,000 lb (4 990 kg)	5,900 lb (2 676 kg)	59°	11,200 lb (5 080 kg)	6,200 lb (2 812 kg)	66°	9,600 lb (4 354 kg)	6,100 lb (2 767 kg)	4,800 lb (2 177 kg)	3,500 lb (1 587 kg)	
22' (6.7 m)	-	-	-	37°	9,800 lb (4 445 kg)	5,500 lb (2 495 kg)	55°	10,000 lb (4 536 kg)	5,200 lb (2 359 kg)	64°	8,900 lb (4 037 kg)	5,300 lb (2 404 kg)	4,200 lb (1 905 kg)	3,000 lb (1 361 kg)	
24' (7.3 m)	-	-	-	29°	8,700 lb (3 946 kg)	4,100 lb (1 860 kg)	52°	9,000 lb (4 082 kg)	4,500 lb (2 041 kg)	61°	8,300 lb (3 765 kg)	4,500 lb (2 041 kg)	3,600 lb (1 633 kg)	2,500 lb (1 134 kg)	
26' (7.9 m)	-	-	-	18°	7,800 lb (3 538 kg)	3,600 lb (1 633 kg)	48°	8,100 lb (3 674 kg)	3,800 lb (1 724 kg)	59°	7,700 lb (3 493 kg)	3,900 lb (1 769 kg)	3,150 lb (1 429 kg)	2,200 lb (998 kg)	
27' (8.2 m)	-	-	-	0°	7,400 lb (3 367 kg)	3,400 lb (1 542 kg)	46°	7,700 lb (3 493 kg)	3,600 lb (1 633 kg)	58°	7,500 lb (3 402 kg)	3,600 lb (1 633 kg)	2,950 lb (1 338 kg)	2,050 lb (931 kg)	
28' (8.5 m)	-	-	-	-	-	-	44°	7,300 lb (3 311 kg)	3,300 lb (1 497 kg)	56°	7,200 lb (3 266 kg)	3,300 lb (1 497 kg)	2,800 lb (1 270 kg)	1,900 lb (862 kg)	
30' (9.1 m)	-	-	-	-	-	-	40°	6,500 lb (2 949 kg)	2,900 lb (1 315 kg)	54°	6,700 lb (3 039 kg)	2,800 lb (1 270 kg)	2,100 lb (953 kg)	1,650 lb (749 kg)	
32' (9.8 m)	-	-	-	-	-	-	36°	5,700 lb (2 586 kg)	2,500 lb (1 134 kg)	51°	6,000 lb (2 722 kg)	2,500 lb (1 134 kg)	2,100 lb (953 kg)	1,400 lb (635 kg)	
34' (10.4 m)	-	-	-	-	-	-	30°	5,100 lb (2 313 kg)	2,200 lb (998 kg)	48°	5,400 lb (2 449 kg)	2,200 lb (998 kg)	1,900 lb (862 kg)	1,200 lb (544 kg)	
36' (11.0 m)	-	-	-	-	-	-	24°	4,500 lb (2 041 kg)	2,000 lb (907 kg)	45°	4,800 lb (2 177 kg)	2,000 lb (907 kg)	1,750 lb (794 kg)	1,000 lb (454 kg)	
38' (11.6 m)	-	-	-	-	-	-	15°	4,000 lb (1 814 kg)	1,800 lb (817 kg)	42°	4,300 lb (1 951 kg)	1,800 lb (817 kg)	1,525 lb (692 kg)	850 lb (386 kg)	
39' (11.9 m)	-	-	-	-	-	-	0°	3,900 lb (1 769 kg)	1,700 lb (771 kg)	41°	3,800 lb (1 724 kg)	1,600 lb (726 kg)	1,350 lb (612 kg)	725 lb (329 kg)	
40' (12.2 m)	-	-	-	-	-	-	-	-	-	39°	3,800 lb (1 724 kg)	1,600 lb (726 kg)	1,350 lb (612 kg)	725 lb (329 kg)	
42' (12.8 m)	-	-	-	-	-	-	-	-	-	35°	3,400 lb (1 542 kg)	1,400 lb (635 kg)	1,150 lb (522 kg)	625 lb (284 kg)	
44' (13.4 m)	-	-	-	-	-	-	-	-	-	31°	3,100 lb (1 406 kg)	1,300 lb (590 kg)	1,050 lb (476 kg)	525 lb (238 kg)	
46' (14.0 m)	-	-	-	-	-	-	-	-	-	27°	2,900 lb (1 315 kg)	1,100 lb (499 kg)	950 lb (431 kg)	425 lb (193 kg)	
48' (14.6 m)	-	-	-	-	-	-	-	-	-	21°	2,700 lb (1 225 kg)	900 lb (408 kg)	850 lb (385 kg)	300 lb (136 kg)	
51' (15.5 m)	-	-	-	-	-	-	-	-	-	0°	2,400 lb (1 089 kg)	700 lb (318 kg)	700 lb (318 kg)	200 lb (91 kg)	

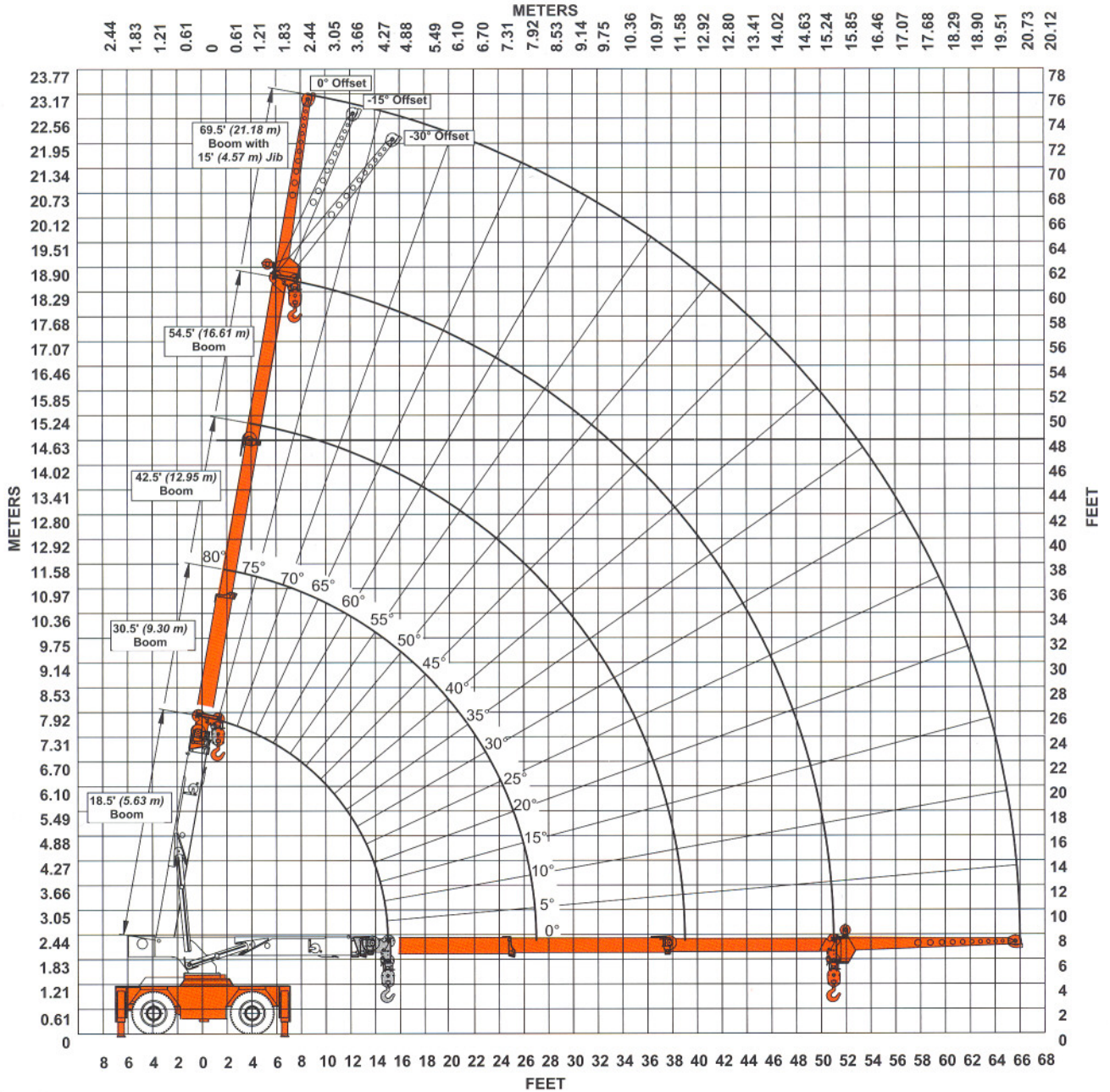
SHADED AREAS ARE GOVERNED BY STRUCTURAL STRENGTH. DO NOT RELY ON TIPPING.

NOTE: For rated reductions for installed load handling equipment, see back page.

NOTE: These charts are only a guide and should not be used to operate the crane. The individual crane load charts, operating instructions and other instructional information must be read and understood prior to operating the crane.

15' (4.6 m) Boom Extension Capacities on Extended and Down Outriggers																	
Main Boom Angle	Offset Angle					Main Boom Angle	Offset Angle					Main Boom Angle	Offset Angle				
	0°		15°		30°		0°		15°		30°		0°		15°		30°
	To 42.5 ft Main Boom	To 54.5 ft Main Boom	To 42.5 ft Main Boom	To 54.5 ft Main Boom			Any Boom Length	To 42.5 ft Main Boom	To 54.5 ft Main Boom	To 42.5 ft Main Boom			To 54.5 ft Main Boom	Any Boom Length	To 42.5 ft Main Boom	To 54.5 ft Main Boom	
80°	-	-	5,000 lb (2268 kg)	5,000 lb (2268 kg)	3,500 lb (1588 kg)	50°	3,400 lb (1542 kg)	2,900 lb (1315 kg)	2,600 lb (1179 kg)	2,600 lb (1179 kg)	2,100 lb (953 kg)	20°	2,200 lb (998 kg)	1,600 lb (726 kg)	2,000 lb (907 kg)	1,590 lb (721 kg)	-
75°	7,500 lb (3402 kg)	-	4,400 lb (1996 kg)	4,400 lb (1996 kg)	3,100 lb (1406 kg)	45°	3,050 lb (1384 kg)	2,600 lb (1179 kg)	2,400 lb (1089 kg)	2,400 lb (1089 kg)	2,000 lb (907 kg)	15°	2,100 lb (956 kg)	1,500 lb (680 kg)	1,950 lb (885 kg)	1,520 lb (690 kg)	-
70°	6,100 lb (2767 kg)	-	3,900 lb (1769 kg)	3,900 lb (1769 kg)	2,800 lb (1270 kg)	40°	2,800 lb (1270 kg)	2,400 lb (1089 kg)	2,250 lb (1021 kg)	2,250 lb (1021 kg)	1,950 lb (885 kg)	0°	2,050 lb (930 kg)	1,460 lb (662 kg)	-	-	-
65°	5,000 lb (2268 kg)	4,600 lb (2087 kg)	3,500 lb (1588 kg)	3,500 lb (1588 kg)	2,550 lb (1157 kg)	35°	2,600 lb (1179 kg)	2,150 lb (975 kg)	2,150 lb (975 kg)	2,050 lb (930 kg)	1,900 lb (862 kg)	5°	2,020 lb (916 kg)	1,450 lb (658 kg)	-	-	-
60°	4,300 lb (1951 kg)	3,800 lb (1724 kg)	3,150 lb (1429 kg)	3,150 lb (1429 kg)	2,350 lb (1066 kg)	30°	2,400 lb (1089 kg)	1,930 lb (876 kg)	2,080 lb (944 kg)	1,850 lb (839 kg)	1,830 lb (830 kg)	0°	2,000 lb (907 kg)	1,440 lb (653 kg)	-	-	-
55°	3,800 lb (1724 kg)	3,300 lb (1497 kg)	2,850 lb (1293 kg)	2,850 lb (1293 kg)	2,200 lb (998 kg)	25°	2,300 lb (1043 kg)	1,750 lb (794 kg)	2,050 lb (930 kg)	1,720 lb (780 kg)	-	-	-	-	-	-	-

Range Chart



5560B 4-SECTION BOOM WITH 15' (4.6 M) BOOM EXTENSION

RATING REDUCTIONS FOR INSTALLED LOAD HANDLING DEVICES		
DEVICE	FROM MAIN BOOM	FROM BOOM EXTENSION
MAIN BLOCK	230 LB (104 kg)	N/A
HOOK & BALL	100 LB (45.4 kg)	100 (45.4 kg)
EXTENSION - STOWED	NO DEDUCTION	N/A
EXTENSION - DEPLOYED	700 LB (318 kg)	NO REDUCTION



Manitowoc Crane Group - Americas

Shady Grove, Pennsylvania Facility

Tel: [Int + 001] 717 597 8121

Fax: [Int + 001] 717 597 4062

www.manitowoccrane.com

Constant improvement and engineering progress make it necessary that we reserve the right to make specification, equipment, and price changes without notice. Illustrations shown may include optional equipment and accessories, and may not include all standard equipment.